

Active RhoA

Catalog Number: 26904

Gene Symbol: RHOA

Description: Anti-Active RhoA Mouse Monoclonal Antibody

Background: Small GTPases are a super-family of cellular signaling regulators. RhoA belongs to the Rho sub-family of GTPases. Rho proteins play critical roles in many actin cytoskeleton-dependent processes including platelet aggregation, cell motility, contraction, and cytokinesis. It regulates the formation of stress fibers and focal adhesions in fibroblasts and Ca^{2+} sensitivity of smooth muscle contraction.

Immunogen: Recombinant full length protein of active RhoA

Tested applications: IP, IHC

Recommended dilutions:

1 μ g for 1~2 mg total cellular proteins

Concentration: 1 mg/ml

Host: mouse

Clonality: Monoclonal

Isotype: IgG

Purity: Purified from ascites

Format: Liquid

Storage buffer:

Preservative: no

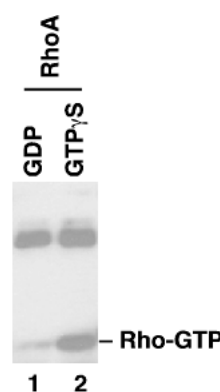
Constituents: PBS (without Mg^{2+} and Ca^{2+}), pH

7.4, 150 mM NaCl, 50% glycerol

Species Reactivity: Anti-active RhoA antibody recognizes active RhoA from vertebrates.

Storage Conditions: Store at $-20^{\circ}C$. Avoid freeze / thaw cycles

Immunoprecipitation and Western blot:



IP: anti-active RhoA mAb

WB: anti-RhoA mAb

IP/WB analysis of active RhoA protein. Purified recombinant RhoA proteins were loaded with GDP (lane 1) or GTP γ S (lane 2). These proteins were immunoprecipitated with anti-active RhoA mouse monoclonal antibody (Cat. # 26904). After SDS/PAGE, the membrane filter was probed with anti-RhoA mouse monoclonal antibody (Cat. # 26008).

For research use only. Not for diagnostic or therapeutic applications.

24 Whitewoods Lane, Malvern, PA 19355

E-mail: sale@neweastbio.com

Tel: (610) 585-8761 FAX: (610) 578-0821

Web: www.neweastbio.com