

Vimentin

Catalog Number: 26054

Gene Symbol: Vimentin

Description: Anti-Vimentin Mouse Monoclonal Antibody

Background: Vimentin is an intermediate filament protein found in various non-epithelial cells, especially in mesenchymal cells. It is often used as a marker of mesenchymally-derived cells or cells undergoing an epithelial-to-mesenchymal transition (EMT) during both normal development and metastatic progression.

Immunogen: A synthetic peptide from the internal region of human vimentin protein.

Tested applications: ELISA, WB, IHC, IP

Recommended dilutions:

ELISA: 1:1000-1:5000

WB: 1:100-1:1000

IHC: 1:50-1:100

Concentration: 1mg/ml

Host: Mouse

Clonality: Monoclonal

Purity: Purified from ascites

Format: Liquid

Storage buffer:

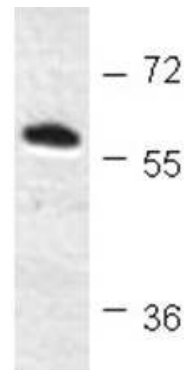
Preservative: no

Constituents: PBS (without Mg^{2+} and Ca^{2+}), pH 7.4, 150 mM NaCl, 50% glycerol

Species Reactivity: Anti-vimentin antibody recognizes vimentin of vertebrates.

Storage Conditions: Store at -20°C. Avoid freeze / thaw cycles

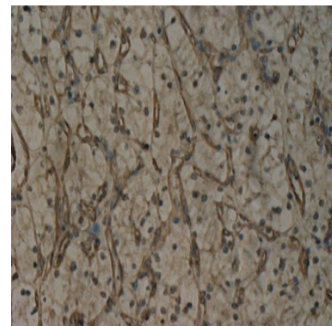
Western blot:



WB:Anti-Vimentin

Western blot analysis of recombinant vimentin protein. Purified His-tagged vimentin protein (Cat.#10190) was blotted with anti-vimentin monoclonal antibody (Cat.# 26054).

Immunohistochemistry:



Immunohistochemical analysis of paraffin-embedded human renal cancer tissue with anti-vimentin monoclonal antibody (Cat. #26054). Tissue samples were fixed with formaldehyde and blocked with 1% serum for 15 min at 37 °C. Antigen retrieval was by heat mediation in citrate buffer (pH6). Samples were then incubated with primary antibody (1:100 dilution) overnight at 4°C. A HRP-conjugated Goat anti-mouse IgG (1:50 dilution) was used as secondary antibody

For research use only. Not for diagnostic or therapeutic applications.