

Rab5A

Catalog Number: 21036

Gene Symbol: RAB5A

Description: Anti-Rab5A Rabbit Polyclonal Antibody

Background: Rab5, consists of three isoforms, Rab5A, Rab5B, and Rab5C, is a small GTPase that is localized to early endosomes. It regulates the fusion between endocytic vesicles and early endosomes, as well as the homotypic fusion between early endosomes.

Immunogen: A synthetic peptide from Rab5A

Tested applications: ELISA, WB, IHC

Recommended dilutions:

ELISA 1:100-1:5000

WB 1:100-1:2000

IHC 1:100-1000

Concentration: 0.2 mg/ml

Host: Rabbit

Clonality: Polyclonal

Purity: Purified from serum

Format: Liquid

Storage buffer:

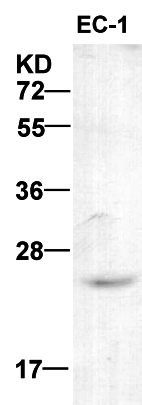
Preservative: no

Constituents: PBS (without Mg²⁺ and Ca²⁺), pH 7.4, 150 mM NaCl, 50% glycerol

Species Reactivity: Rab5A antibody recognizes Rab5A from vertebrates.

Storage Conditions: Store at -20°C. Avoid freeze / thaw cycles

Western blot:



WB : anti-Rab5A pAb

EC-1 cell lysate was used for Western blot with anti-Rab5A polyclonal antibody (cat # 21036).

For research use only. Not for diagnostic or therapeutic applications.