

## Rho family pan antibody

### (Cdc42+Rac1+RhoA)

**Catalog Number:** 21035

**Gene Symbol:** CDC42+RAC1+RHOA

**Description:** Anti-Cdc42+Rac1+RhoA Rabbit Polyclonal Antibody

**Background:** Small GTPases are a super-family of cellular signaling regulators. The Rho sub-family GTPases regulate cell motility, cell division, and gene transcription.

**Immunogen:** A synthetic peptide from the N-terminal region common among Cdc42, Rac1, and RhoA.

**Tested applications:** ELISA, WB, IHC

**Recommended dilutions:**

ELISA 1:100-1:5000

WB 1:100-1:1000

IHC 1:100-1:1000

**Concentration:** 0.2 mg/ml

**Clonality:** Polyclonal

**Purity:** Purified from serum

**Format:** Liquid

**Storage buffer:**

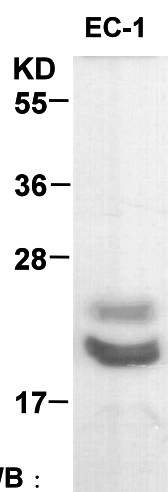
Preservative: no

Constituents: PBS (without Mg<sup>2+</sup> and Ca<sup>2+</sup>), pH 7.4, 150 mM NaCl, 50% glycerol

**Species Reactivity:** Rho family pan antibody recognizes Cdc42, Rac1, and RhoA from vertebrates.

**Storage Conditions:** Store at -20°C. Avoid freeze / thaw cycles

**Western blot:**



**WB :**

**anti-cdc42/Rac/Rho pAb**

EC-1 whole-cell lysate was used for Western blot with the polyclonal Rho family pan antibody (cat # 21035).

For research use only. Not for diagnostic or therapeutic applications.

24 Whitewoods Lane, Malvern, PA 19355

E-mail: [sale@neweastbio.com](mailto:sale@neweastbio.com)

Tel: (610) 585-8761 FAX: (610) 578-0821

Web: [www.neweastbio.com](http://www.neweastbio.com)