

Clusterin

Catalog Number: 26043

Gene Symbol: CLU

Description: Anti-Clusterin Mouse Monoclonal Antibody

Background: Clusterin (apolipoprotein J) belongs to the clusterin family, is a 75 - 80 kDa disulfide-linked heterodimeric protein associated with the clearance of cellular debris and apoptosis. It is a secreted chaperone that can under some stress conditions also be found in the cell cytosol. Clusterin has been suggested to be involved in several basic biological events such as cell death, tumor progression, and neurodegenerative disorders.

Immunogen: A synthetic peptide near the N-terminus of Clusterin, human origin.

Tested applications: ELISA, WB, IHC

Recommended dilutions:

ELISA: 1:1000-1:5000

WB: 1:500-1:2000

IHC: 1:50-1:100

Concentration: 1 mg/ml

Host: Mouse

Clonality: Polyclonal

Purity: Purified from ascites.

Format: Liquid

Storage buffer:

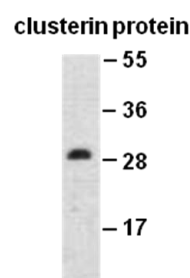
Preservative: no

Constituents: PBS (without Mg²⁺ and Ca²⁺), pH 7.4, 150 mM NaCl, 50% glycerol.

Species Reactivity: Anti-Clusterin antibody recognizes Clusterin of vertebrates.

Storage Conditions: Store at -20°C. Avoid freeze / thaw cycles.

Western blot:



WB: Anti-clusterin mAb

Western blot analysis of recombinant Clusterin protein. Purified His-tagged Clusterin protein (33-225) (Cat. #10160) was blotted with anti-Clusterin mouse monoclonal antibody (Cat. #26043).

For research use only. Not for diagnostic or therapeutic applications.