



— A helping hand for your research

Product Description

Product Name: RhoA Protein

Synonyms: Ras homolog gene family, member A, ARHA, ARH12, RHO12, RHOH12

Catalogue Number: 10104

Source: Human, recombinant full length, His₆-tag

Expression Host: E. coli

Molecular Weight: 22 kDa

Purity: >99% by SDS-PAGE

Introduction: Small GTPases are a super-family of cellular signaling regulators. RhoA belongs to the Rho sub-family of GTPases. Rho proteins play critical roles in many actin cytoskeleton- dependent processes including platelet aggregation, cell motility, contraction, and cytokinesis. It regulates the formation of stress fibers and focal adhesions in fibroblasts and Ca²⁺ sensitivity of smooth muscle contraction.

Amino Acid Sequence (1-193)

MAAIRKKLVIVGDGACGKTCLLIVFSKDQFPEVYVPTV
FENYVADIEVDGKQVELALWDTAGQEDYDLRPLSYPD
TDVILMCFSIDSPDSLENIPEKWTPEVKHFPCNPVPIIL
VGNKKDLRNDHEHTRRELAKMKQEPVKPEEGRDMANRIG
AFGYMECSAKTKDGVREVFEMATRAALQARRGKKKSGC
LVL

Properties

Physical Appearance (form): Dissolved in 20mM Tris-HCl, pH8.0, 150mM NaCl.

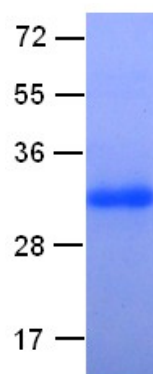
Physical Appearance (form): White or clear

Concentration: 1 mg/mL

Storage: -80°C

Preparation Instructions

Adding of 10 mM β-mercaptoethanol or 1 mM DTT into the solution to protect the protein is recommended and using of non-ionic detergents such as n-Dodecyl β-D-maltoside (DoDM) or polyethylene detergents (e.g. C₁₂E₁₀) also help to stabilize the protein. Avoid repeated freezing and thawing.



The purity of His-tagged RhoA was determined by SDS- PAGE and Coomassie Brilliant Blue Staining.

References

1. Canman, J. C. et al., Science 322: 1543-1546, 2008.
2. Guilluy, C. et al., Nature Med. 16: 183-190, 2010.
3. Machacek, M. et al., Nature 461: 99-103, 2009
4. Nakamura, M. et al., Invest. Ophthal. Vis. Sci. 42: 941-947, 2001.
5. Rao, P. V. et al., Invest. Ophthal. Vis. Sci. 42: 1029-1037, 2001.
6. Valderrama, F. et al., Science 311: 377-381, 2006.
7. Wang, H.-R. et al., Science 302: 1775-1779, 2003.
8. Wu, K. Y. et al., Nature 436: 1020-1024, 2005.
9. Yoshida, S. et al., Science 313: 108-111, 2006.

For research use only. Not for diagnostic or therapeutic applications.

24 Whitewoods Lane, Malvern, PA 19355 Tel: (610) 945-2007 Fax: (610) 945-2008
E-mail: sale@neweastbio.com Web: www.neweastbio.com