

RheB

Catalog Number: 21098

Gene Symbol: RHEB

Description: Anti-RheB Rabbit Polyclonal Antibody

Background: Small GTPases are a super-family of cellular signaling regulators. RheB is a member of the Ras-superfamily GTPases. RheB has been shown to interact with C-Raf, Mammalian target of rapamycin (mTOR), TSC2, Ataxia telangiectasia mutated (ATM), KIAA1303 and Ataxia telangiectasia and Rad3 related (ATR).

Immunogen: A synthetic peptide from the C-terminal region of human RheB

Tested applications: ELISA, WB, IHC

Recommended dilutions:

ELISA: 1:1000-1:5000

WB: 1:100-1:1000

IHC: 1:100-1:1000

Concentration: 0.2 mg/ml

Host: Rabbit

Clonality: Polyclonal

Purity: Purified from antisera

Format: Liquid

Storage buffer:

Preservative: no

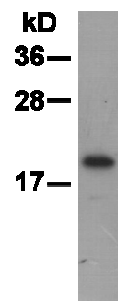
Constituents: PBS (without Mg²⁺ and Ca²⁺), pH 7.4, 150 mM NaCl, 50% glycerol

Species Reactivity: Anti-RheB antibody recognizes RheB of vertebrates.

Storage Conditions: Store at -20°C. Avoid freeze / thaw cycles

Western blot:

HEK-293T



pAb: anti-RheB pAb

Western blot analysis of RheB proteins.

Whole-cell lysate of HEK-293T cells was used for western blot with the polyclonal anti-RheB antibody (Cat # 21098).

For research use only. Not for diagnostic or therapeutic applications.