

Ran

Catalog Number: 21097

Gene Symbol: RAN

Description: Anti-Ran Rabbit Polyclonal Antibody

Background: Ran (Ras-related nuclear protein) is a member of the Ras-superfamily GTPases. Ran is involved in the transport of proteins across the nuclear envelope, as well as in microtubule organization during mitosis.

Immunogen: A synthetic peptide from the C-terminal region of human Ran

Tested applications: ELISA, WB, IHC

Recommended dilutions:

ELISA: 1:1000-1:5000

WB: 1:100-1:2000

IHC: 1:100-1:1000

Concentration: 0.2 mg/ml

Host: Rabbit

Clonality: Polyclonal

Purity: Purified from antisera

Format: Liquid

Storage buffer:

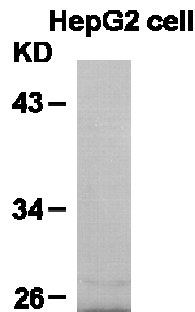
Preservative: no

Constituents: PBS (without Mg²⁺ and Ca²⁺), pH 7.4, 150 mM NaCl, 50% glycerol

Species Reactivity: Anti-Ran antibody recognizes Ran of vertebrates.

Storage Conditions: Store at -20°C. Avoid freeze / thaw cycles

Western blot:



WB: anti-Ran pAb

Western blot analysis of Ran proteins. Whole-cell lysate of HepG2 cells was used for western blots with the polyclonal anti-Ran antibody (Cat # 21097).

For research use only. Not for diagnostic or therapeutic applications.