

RalB

Catalog Number: 21033

Gene Symbol: RALB

Description: Anti-RalB Rabbit Polyclonal Antibody

Background: The Ras-like small G proteins, RalA/B, are important components of Ras signaling pathways, implicated in the initiation and maintenance of tumorigenic transformation, as well as vesicle transport, apoptosis, transcription, cell migration, and cell proliferation.

Immunogen: A synthetic peptide from the internal region of RalB protein.

Tested applications: ELISA, WB, IHC

Recommended dilutions:

ELISA 1:100-1:5000

WB 1:100-1:2000

IHC 1:100-1:1000

Concentration: 0.2 mg/ml

Host: Rabbit

Clonality: Polyclonal

Purity: Purified from serum

Format: Liquid

Storage buffer:

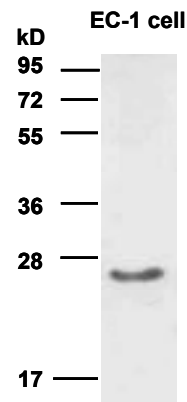
Preservative: no

Constituents: PBS (without Mg²⁺ and Ca²⁺), pH 7.4, 150 mM NaCl, 50% glycerol

Species Reactivity: RalB antibody recognizes RalB from vertebrates.

Storage Conditions: Store at -20°C. Avoid freeze / thaw cycles

Western blot:



WB: anti-RalB pAb

Western blot analysis of RalB proteins. EC-1 cell lysate was used for Western blot with anti-RalB polyclonal antibody (cat # 21033).

For research use only. Not for diagnostic or therapeutic applications.

24 Whitewoods Lane, Malvern, PA 19355 Tel: (610) 945-2007 Fax: (610) 945-2008
E-mail: sale@neweastbio.com Web: www.neweastbio.com