

## RET (C634Y)

**Catalog Number:** 26146

**Gene Symbol:** RET, PTC, CDHF12, CAHF16, HSCR1, MEN2A, MEN2B

**Description:** Anti-RET (C634Y) Mouse Monoclonal Antibody

**Background:** RET protein is encoded by the RET proto- oncogene. It is a receptor tyrosine kinase. RET loss of function mutations are associated with the development of Hirschsprung's disease, while gain of function mutations are associated with development of various types of human cancer, including medullary thyroid carcinoma, multiple endocrine neoplasias type 2A and 2B, pheochromocytoma and parathyroid hyperplasia.

**Immunogen:** A synthetic peptide from the internal region of RET which includes the mutation of C634Y, human origin.

**Tested applications:** ELISA, WB, IHC

**Recommended dilutions:**

ELISA: 1:1000-1:2000

WB: 1:500-1:1000

IHC: 1:50-1:100

**Concentration:** 0.5 mg/ml

**Host:** Mouse

**Clonality:** Monoclonal

**Purity:** Purified from ascites

**Format:** Liquid

**Storage buffer:**

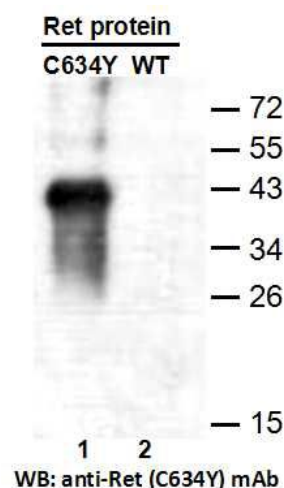
Preservative: no

Constituents: PBS (without Mg<sup>2+</sup> and Ca<sup>2+</sup>), pH 7.4, 150 mM NaCl, 50% glycerol

**Species Reactivity:** Recognizes C634Y mutant, but not wild-type RET of vertebrates.

**Storage Conditions:** Store at -20°C. Avoid freeze / thaw cycles.

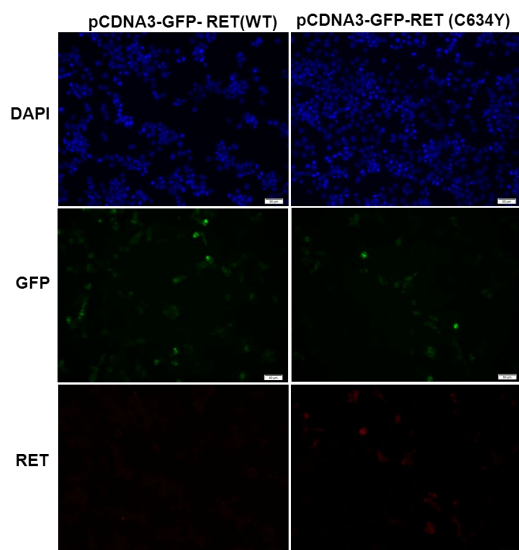
### Western blot:



**Western blot analysis of recombinant RET (C634Y) and wildtype proteins.** Purified His-tagged RET (C634Y) protein (lane1) and corresponding wild-type protein (lane2) were blotted with anti-RET (C634Y) monoclonal antibody (Cat. #26146).

For research use only. Not for diagnostic or therapeutic applications.

## Immunofluorescence:



### Immunofluorescence of cells expressing RET proteins with anti-RET (C634Y) antibody.

HEK293T cells were transfected with pCDNA3-GFP-RET (WT) plasmid (left column) or pCDNA3-GFP-RET (C634Y) plasmid (right column), then fixed and stained with anti-RET (C634Y) monoclonal antibody (Cat. #26146).

For research use only. Not for diagnostic or therapeutic applications.

24 Whitewoods Lane, Malvern, PA 19355 Tel: (610) 945-2007 FAX: (610) 945-2008  
E-mail: [sale@neweastbio.com](mailto:sale@neweastbio.com) Web: [www.neweastbio.com](http://www.neweastbio.com)