

## RheB

**Catalog Number:** 26015

**Gene Symbol:** RHEB

**Description:** Anti-RheB Mouse Monoclonal Antibody

**Background:** RheB (Ras Homolog Enriched in Brain) is an evolutionarily conserved member of the Ras-family of small GTP-binding proteins originally found to be rapidly induced by synaptic activity in the hippocampus following seizure. While it is expressed at relatively high levels in the brain, RheB is widely expressed in other tissues and may be induced by growth factor stimulation. RheB has an important role in regulating the insulin/TOR signaling pathway. The mammalian target of rapamycin, mTOR, is a serine/threonine protein kinase that acts as a sensor for ATP and amino acids, balancing the availability of nutrients with translation and cell growth. The tuberin/hamartin (TSC2/TSC1) complex inhibits mTOR activity indirectly by inhibiting RheB via tuberin's GAP activity.

**Immunogen:** Recombinant full length protein of RheB.

**Tested applications:** ELISA, WB, IHC

**Recommended dilutions:**

ELISA 1:100-1:5000

WB 1:100-1:1000

IHC 1:100-1:1000

**Concentration:** 1 mg/ml

**Host:** mouse

**Clonality:** Monoclonal

**Isotype:** IgG

**Purity:** Purified from ascites

**Format:** Liquid

**Storage buffer:**

Preservative: no

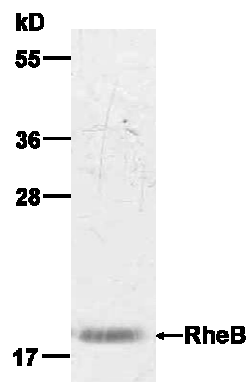
Constituents: PBS (without Mg<sup>2+</sup> and Ca<sup>2+</sup>), pH

7.4, 150 mM NaCl, 50% glycerol

**Species Reactivity:** RheB antibody recognizes RheB proteins of vertebrates.

**Storage Conditions:** Store at -20°C. Avoid freeze / thaw cycles

### Western blot:



**WB: anti-RheB MAb**

Western blot analysis of RheB proteins.

HEK-293 whole-cell lysate was used for Western blot.

**For research use only. Not for diagnostic or therapeutic applications.**