

RalB

Catalog Number: 26018

Gene Symbol: RALB

Description: Anti-RalB Mouse Monoclonal Antibody

Background: The Ras-like small G proteins, RalA/B, are important components of Ras signaling pathways, implicated in the initiation and maintenance of tumorigenic transformation, as well as vesicle transport, apoptosis, transcription, cell migration, and cell proliferation.

Immunogen: Recombinant full length protein of RalB

Tested applications: ELISA, WB, IP, IHC

Recommended dilutions:

ELISA: 1:1000-1:5000

WB: 1:100-1:2000

IP: 1 µg for 1~2 mg total cellular proteins

IHC: 1:100 dilution

Concentration: 1 mg/ml

Host: mouse

Clonality: Monoclonal

Isotype: IgG

Purity: Purified from ascites

Format: Liquid

Storage buffer:

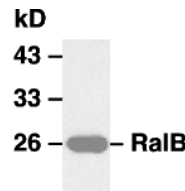
Preservative: no

Constituents: PBS (without Mg²⁺ and Ca²⁺), pH 7.4, 150 mM NaCl, 50% glycerol

Species Reactivity: Anti-RalB antibody recognizes RalB of vertebrates.

Storage Conditions: Store at -20°C. Avoid freeze / thaw cycles

Western blot:



WB: anti-RalB mAb

Western blot analysis of RalB proteins. EC-1 cell lysate was used for Western blot with anti-RalB monoclonal antibody (cat # 26018).

For research use only. Not for diagnostic or therapeutic applications.