

Cdc42

Catalog Number: 26008

Gene Symbol: CDC42

Description: Anti-Cdc42 Mouse Monoclonal Antibody

Background: Small GTPases are a super-family of cellular signaling regulators. Cdc42 belongs to the Rho sub-family of GTPases that regulate cell motility, cell division, and gene transcription. GTP binding increases the activity of Cdc42, and the hydrolysis of GTP to GDP renders it inactive. GTP hydrolysis is aided by GTPase activating proteins (GAPs), while exchange of GDP for GTP is facilitated by guanine nucleotide exchange factors (GEFs).

Immunogen: Recombinant full length protein of Cdc42

Tested applications: ELISA, WB, IHC

Recommended dilutions:

ELISA 1:100-1:5000

WB 1:100-1:2000

Concentration: 1 mg/ml

Host: mouse

Clonality: Monoclonal

Isotype: IgG

Purity: Purified from ascites

Format: Liquid

Storage buffer:

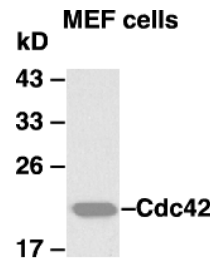
Preservative: no

Constituents: PBS (without Mg²⁺ and Ca²⁺), pH 7.4, 150 mM NaCl, 50% glycerol

Species Reactivity: Cdc42 antibody recognizes Cdc42 from vertebrates.

Storage Conditions: Store at -20°C. Avoid freeze / thaw cycles

Western blot:



WB: anti-Cdc42 mAb

Western blot analysis of Cdc42 proteins. MEF whole-cell lysate was used for western blot with the monoclonal anti-Cdc42 antibody (cat # 26008).

For research use only. Not for diagnostic or therapeutic applications.