

## Active Arl1

**Catalog Number:** 26924

**Gene Symbol:** ARL1

**Description:** Anti-active Arl1 Mouse Monoclonal Antibody

**Background:** Arl1 (Arf-like 1) localizes to the Golgi complex, where it is believed to recruit effector proteins to the trans-Golgi network. Golgi-localized proteins golgin-97 and golgin-245 have been shown as Arl1 effectors. Additional Arl1 effectors include the GARP (Golgi-associated retrograde protein)/VFT (Vps53) vesicle-tethering complex and Arfaptin 2. In *Drosophila* zygotes, mutation of Arl1 is lethal.

**Immunogen:** Recombinant Arl1 protein (active form)

**Tested applications:** IP, IHC, IF

**Recommended dilutions:**

1 µg for 1~2 mg total cellular proteins for IP

1:50~100 dilutions for IHC and IF

**Concentration:** 1 mg/ml

**Host:** Mouse

**Clonality:** Monoclonal

**Purity:** Purified from ascites

**Format:** Liquid

**Storage buffer:**

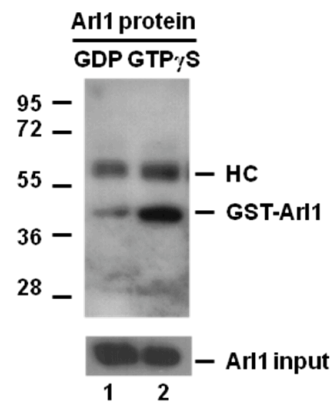
Preservative: no

Constituents: PBS (without Mg<sup>2+</sup> and Ca<sup>2+</sup>), pH 7.4, 150 mM NaCl, 50% glycerol.

**Species Reactivity:** Arl1 antibody recognizes active Arl1-GTP from vertebrates.

**Storage Conditions:** Store at -20°C. Avoid freeze / thaw cycles.

## Immunoprecipitation and Western blot:



IP: anti-active Arl1 mAb

IB: anti-Arl1 mAb

**Arl1 Activation Assay.** Purified GST-tagged Arl1 proteins (Cat. #10136) were immunoprecipitated with the anti-active Arl1 monoclonal antibody (Cat. # 26924) after treated with GDP (lane 1) or GTPγS (lane 2), and was blotted with anti- Arl1 monoclonal antibody (Cat. #26056). Arl1 protein input control is shown in the bottom panel.

For research use only. Not for diagnostic or therapeutic applications.